



La proprietà del presente disegno e' di  
**DAIKIN APPLIED EUROPE S.p.A.**  
La riproduzione, anche se parziale, e la diffusione  
senza autorizzazione sono vietate a termini di legge.  
This document is reserved property of  
**DAIKIN APPLIED EUROPE S.p.A.**  
Reproduction or use for any purpose  
without authorization is strictly forbidden by law.

Denominazione / Identification  
**EWAT064CZN-A2**

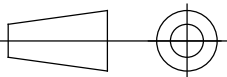
Dis./Dwg.  
**A.Lorenzi**  
Ver./Check  
**M.Caradonna**  
Appr./Passed  
**A.Consorti**

Codice /Part. No.  
**EWAT064CZN-A2**

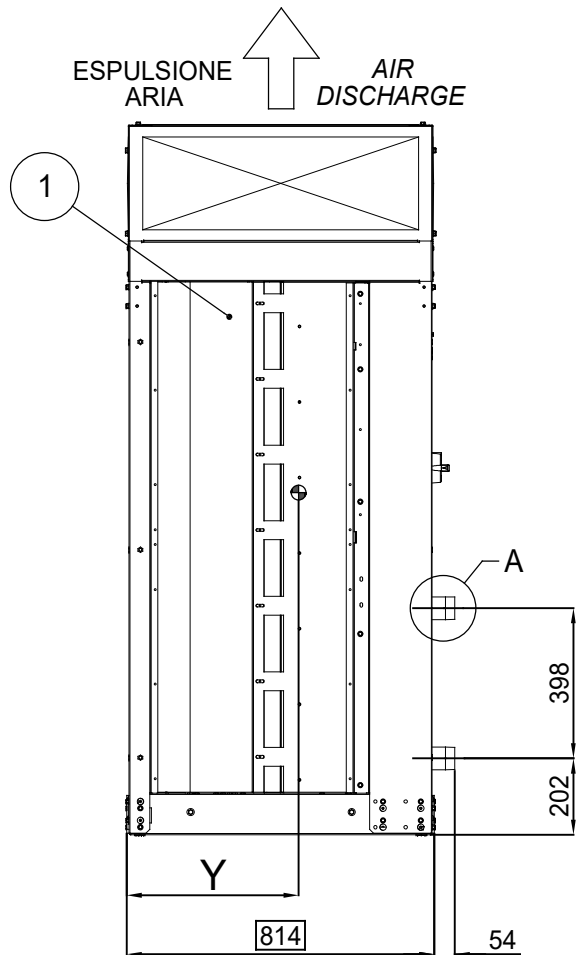
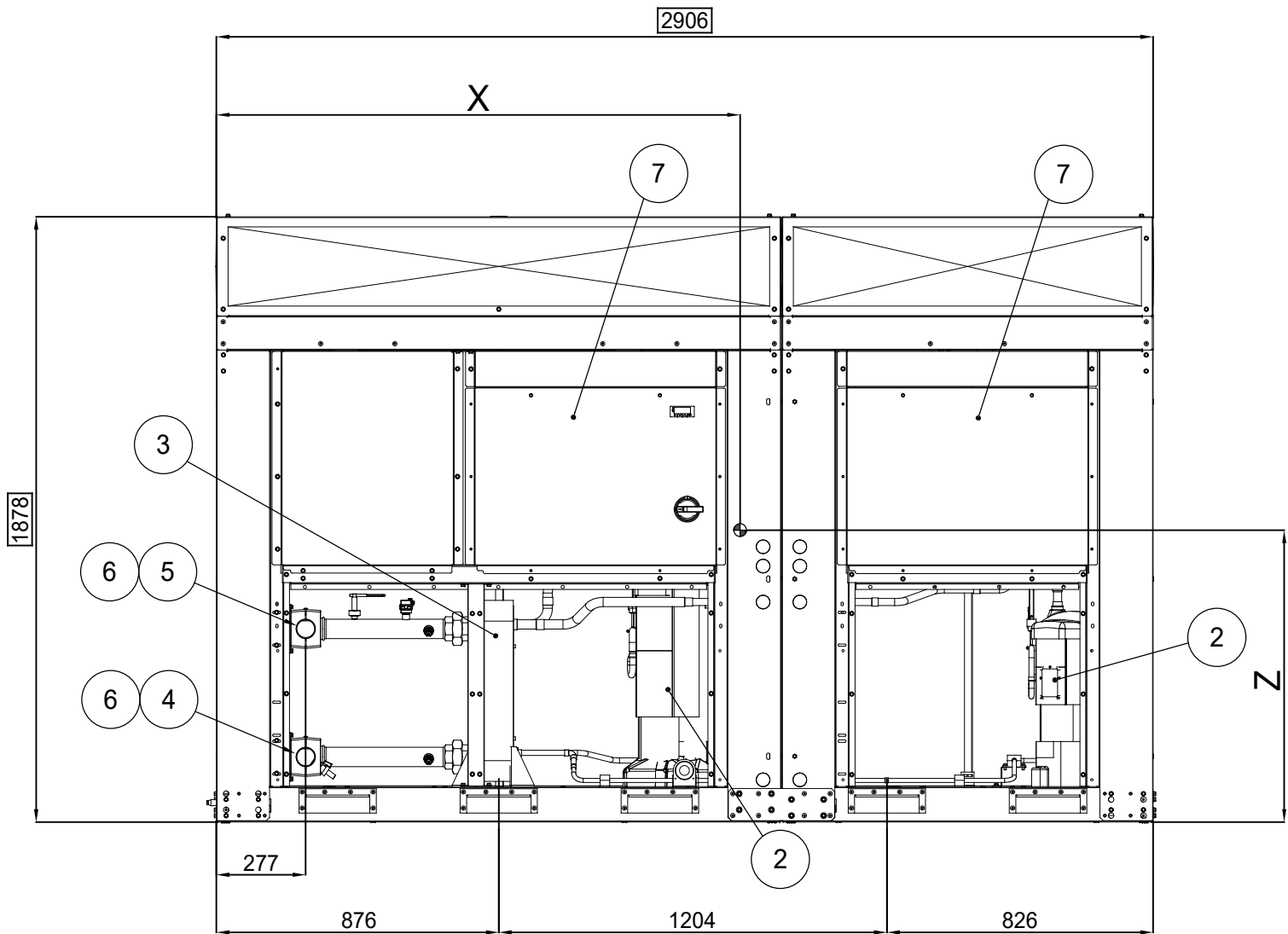
Data/Date  
**23/12/2020**

Foglio-Sheet  
**A3**

Scala-Scale  
**1:20**

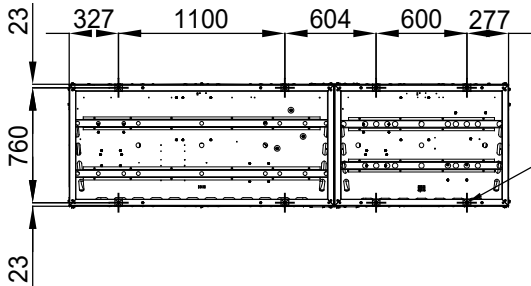


Tolleranza generale  
**General Tolerance** ±20mm



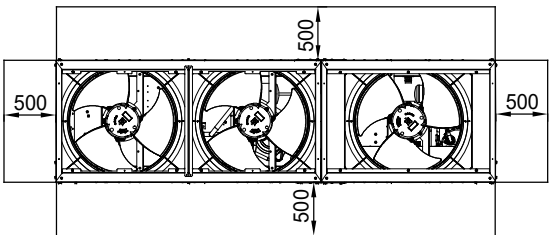
LEGENDA - LEGEND

1. BATTERIA CONDENSANTE  
CONDENSER COIL
2. COMPRESSORE  
COMPRESSOR
3. EVAPORATORE  
EVAPORATOR
4. ENTRATA ACQUA EVAPORATORE  
EVAPORATOR WATER INLET
5. USCITA ACQUA EVAPORATORE  
EVAPORATOR WATER OUTLET
6. CONNESSIONI EVAPORATORE/POMPE 2" GAS  
EVAPORATOR/PUMPS CONNECTIONS 2" GAS
7. PANNELLO DI COMANDO E CONTROLLO  
OPERATING AND CONTROL PANEL
8. FORI Ø12 mm PER MONTAGGIO UNITA'  
UNIT MOUNTING HOLES Ø12 mm



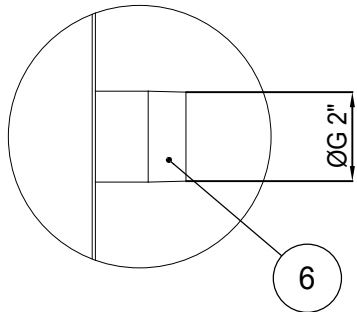
DISPOSIZIONE FORI MONTAGGIO (VISTA DAL BASSO)  
MOUNTING HOLES LOCATION (BOTTOM VIEW)

SCALA 1:50  
SCALE 1:50

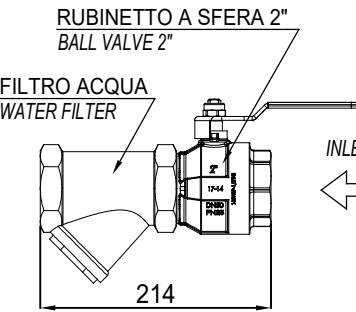
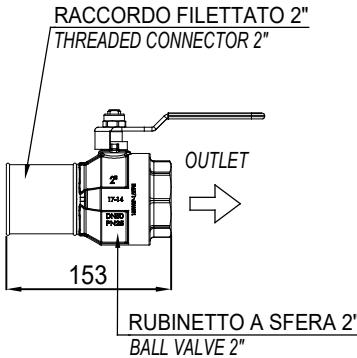


SPAZIO MINIMO NECESSARIO MANUTENZIONE  
MINIMUM REQUIRED MAINTENANCE

DETTAGLIO A  
DETAIL A



WATER KIT - SHIPPING LOOSE



VERSIONE VERSION	TIPO CONDENSATORE CONDENSER TYPE	PESO / WEIGHT KG		BARICENTRO CENTRE OF GRAVITY		
		SPEDIZIONE SHIPPING	FUNZIONAMENTO OPERATING	X	Y	Z
EWAT064CZN-A2	ALLUMINIO / ALUMINUM ACRYLIC COATED	574	580	1507	480	828